

MamaDos -

Feeding suckling sows



Increases feed intake and improves the Productivity of the sows for greater profitability



- higher feed intake
- more and stronger piglets
- better condition of the sow
- less weight loss of the sow
- saving on feed costs throughout the entire production cycle
- more litters from sows - more profit

MamaDos Feeding Sows

More energy through higher feed intake

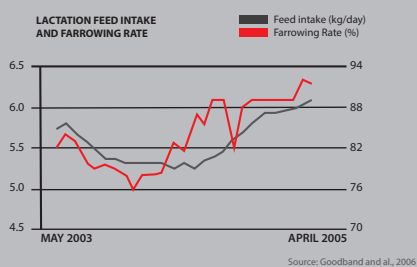


Easier than ever before to increase feed intake and performance

Effect of increasing the feed intake of the sow during lactation

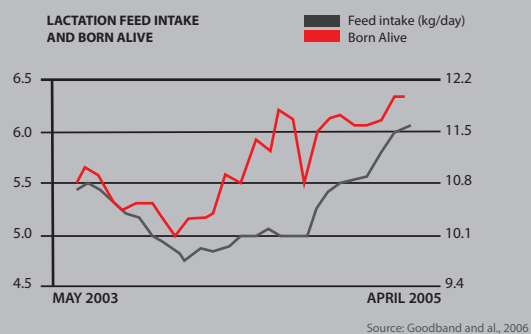
1

Higher fertility rate of sows



2

More piglets next time



3



More milk, heavier piglets on weaning

5



Saving in feed costs during pregnancy. Staying in condition is cheaper than build up

4



Less weight loss of the sow- Shortening the intermission time

6



More litters from sows and higher life quality - more profit

MamaDos Feeding Sows



MamaDos and MamaDos Pro - simple, reliable and flexible

MamaDos- Feeding sows

With increasing numbers of sows per litter, one of the biggest challenges is to provide the mother with enough energy. Deficits have an effect on milk yield, sow condition and piglet growth.



The **MamaDos sow feeding** system is a feed dispenser, which is mounted directly underneath a commercially available volumetric feeder and supplies the sow with food individually. With the **MamaDos feeding system**, a higher feed intake can be achieved.



Advantages:

- Higher feed intake
- Better milk production of sows promotes piglet growth
- Better sow condition / lower weight loss
- Food can be rationed or fed ad lib.
- Feeding according to feed curves is possible
- Small and fresh portions
- Consumption control on Topo
- SmartControl - intuitive and easy operation via smartphone and NFC chip
- Optional with water added

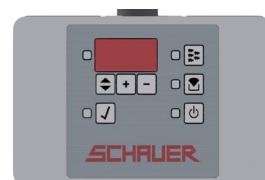
MamaDos Pro Due to the additional controller on the dosing device, MamaDos Pro offers the option of operating directly at the level of the individual sow. thus, animal-specific data can be displayed or changed, and well as individual portions can be dosed. In addition, the food can

also be moistened using an optional water valve. As with MamaDos, the smartphone and NFC technology make it possible to view animal data and adjust settings.



Additional operating option of the dispenser via controller:

- On / off button
- Single portions
- Acknowledgment of management tasks
- Farrowing button to adjust the feed curve
- Display of the consumed quantity
- Amount of feed conversion



The overall view



Smart Control



Only a perfectly coordinated overall system ensures the best possible operating success

TOPO-Feeding computer

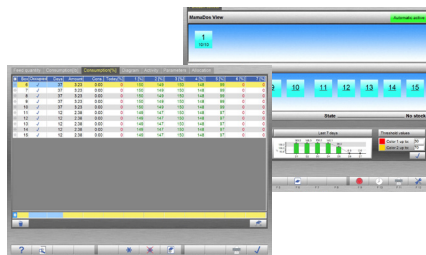
The complete control takes place by means of a proven TOPO feeding computer. It can be fed by means of a vibrating sensor as well as according to predefined feed curves.

Thus, for example it is possible to feed the sow before farrowing according to an individual feed curve and ad lib. after birth. The conversion is carried out independently by the TOPO feeding computer. The time of feed dosing is determined by the sow itself. The feed requirement of the sow is recorded by means of a vibrating sensor in the drain and then a small portion is dosed out.

Smart - Control with NFC

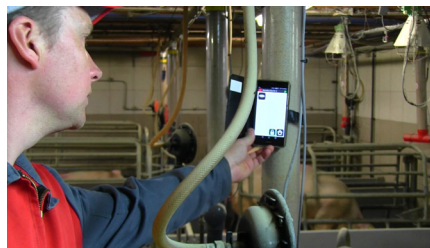
In addition to the control via the TOPO feeding computer, it is also possible to regulate the feeding via a mobile phone or tablet via Smart Control App.

Automatic connection with NFC Smart Control ensures convenient and simple remote control, monitoring and parameterization of the dosing unit.



FarmManager – Online Animal management

Network-capable database system for central data collection and evaluation of feed consumption from all MamaDos dispensers, feeding stations and by individual animals. An integrated monitoring and alarm system provides the perfect overview in real time.



SCHAUER
PERFECT FARMING SYSTEMS

SCHAUER Agrotrolic GmbH
A-4731 Prambachkirchen, Passauer Str. 1
Tel. +43/72 77/23 26-0
Fax +43/72 77/23 26-22
office@schauer-agrotronic.com

SCHAUER Maschinenfabrik GmbH
Vertriebsgesellschaft
D-94060 Pocking, Gewerbering 19
Tel. +49/85 31/82 72
Fax +49/85 31/82 71
germany@schauer-agrotronic.com

SCHAUER Agrotrolic AG
CH-6247 Schötz, Sentmatte 4
Tel. +41/41/926 80 00
Fax +41/41/926 80 01
office@schauer.ch

office@schauer-agrotronic.com
www.schauer-agrotronic.com