

# COMPIDENT *MLP2*

THE WORLD'S MOST PRECISE FEEDING SYSTEM FOR  
FATTENING PERFORMANCE TESTING!



**SCHAUER**<sup>®</sup>

PERFECT FARMING SYSTEMS

[www.schauer-agrotronic.com](http://www.schauer-agrotronic.com)

TECHNICAL PERFECTION REDUCED TO THE ESSENTIAL!



## COMPIDENT *MLP2 PRO*

- Up to 14 fattening pigs per station
- Pigs from approx. 25 kg to approx. 120 kg
- Precise trough weighing to 1 g with the trough flap closed
- Modular structure and easy accessibility
- Improved cleaning options and simple operation
- Optionally expandable with a fully automatic MLP weighing platform
- Can be used for floury and pelleted feed



## COMPIDENT *MLP2 PIGLET*

- **Awarded „Best Product 2020“ at the Agros trade fair in Moscow**
- Up to 12 piglets per station
- Piglets from approx. 8 kg to approx. 35 kg
- Precise trough weighing to 1 g with the trough flap closed
- Optimized trough shape for the little piglets
- The most precise feeding system for rearing piglets



## COMPIDENT *MLP2 SMART*

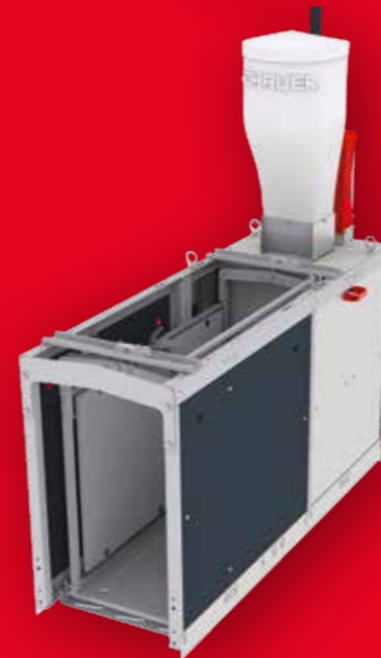
- Up to 14 fattening pigs per station
- Pigs from approx. 25 kg to approx. 120 kg
- Precise trough weighing to 1 g
- Integrated and fully automatic weighing platform
- No trough flap and a constantly weighed feeding trough
- Simple mechanical construction without pneumatic components



HIGHEST PRECISION (+/- 1G)  
AND FIRST-CLASS QUALITY



OPTIMAL TROUGH HYGIENE AND  
EASE OF SERVICE



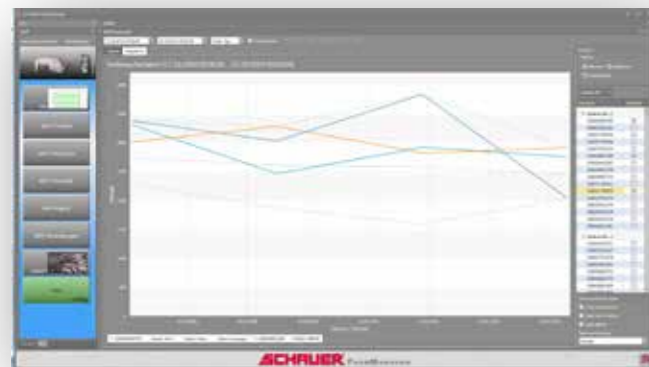
NEW SDU CONTROL UNIT FOR  
UP TO 12 MLP2 STATIONS

CORROSION-RESISTANT CONSTRUCTION  
USING STAINLESS STEEL & PVC

MARKET LEADER FOR TESTING FAT-  
TENING PERFORMANCE IN EUROPE

**SCHAUER**<sup>®</sup>  
PERFECT FARMING SYSTEMS

# FARM MANAGER *MLP2*



## MONITOR ALL OPERATIONS WITH JUST ONE PROGRAM:

The data management system enables flexible evaluations in both tabular and graphic form as well as an individually adjustable alarms.

Realtime: Stay fully informed at anytime and anywhere – as a matter of course, because of access to the data via the Internet.

The FarmManager-MLP offers simple animal management on the one hand and detailed evaluations of consumption and weights on the other. Furthermore, animals can be compared with each other and also with the average of a larger group of animals.

All animal and consumption data can be exported automatically and integrated in other databases.

## OPERATIONAL CONTROL, ALARM CENTRE:

Alarm messages are signalled with traffic light colours and set in a plan configured specifically for the farm. Additionally, it can be optionally expanded with the integration of external systems, sensors and cameras.



## NEW SDU CONTROL UNIT:

Use of international standards in design and ease of use are the focus of this new development. Each station can be operated, calibrated and monitored on site using a touchscreen.

Data communication takes place via standard electronic interfaces (RS485, USB). The compact and encapsulated construction of the station electronics and pneumatics increases the service life and reduces the amount of servicing required.



A large amount of detailed information on feeding (e.g. time of feeding, amount of feed, water consumption, animal weights, ...) and individual animal data can now be saved over an entire fattening period.

**One SDU can handle up to 12 MLP stations!**

THE ONLINE ANIMAL MANAGEMENT SYSTEM FOR

MONITORING & REAL-TIME DATA ACQUISITION!

# ANIMAL SCALES *MLP2*

HIGH QUALITY ANIMAL SCALES WITH  
AUTOMATIC ANIMAL DETECTION!

## MOBILE ANIMAL SCALES FOR CENTRAL ANIMAL WEIGHING

- Highest weighing precision of 0.1 kg
- For the safe determination of animal weights when loading and unloading and for control weighing
- Automatic animal detection and transfer of individual animal weights to the FarmManager-MLP
- The perfect solution for everyone who wants to upgrade their „MLP 2 Pro“ or „MLP 2 Piglet“ with a mobile high-quality scale in order to be able to carry out precise and central animal weighing!



## STATIONARY SCALE FOR DAILY ANIMAL WEIGHING

- For the daily fully automatic determination of animal weights
- Easy to clean thanks to the lift-up elements
- Simple width adjustment for animal weights from 25 to 120 kg
- Highest weighing precision of 0.1 kg
- Parts in contact with the floor made of stainless steel
- Installed with the „MLP 2 Smart“ station, and optionally with „MLP 2 Pro“



DETERMINE EXACTLY THE DAILY WEIGHT GAINS,

AND IN THE PROCESS SAVE A LOT OF TIME!



**SCHAUER Agrotronic GmbH**

AT-4731 Prambachkirchen, Passauer Str. 1

Tel. +43 / 72 77 / 23 26-0

Fax +43 / 72 77 / 23 26-22

[office@schauer-agrotronic.com](mailto:office@schauer-agrotronic.com)

**SCHAUER Maschinenfabrik GmbH**

**Vertriebsgesellschaft**

DE-94060 Pocking, Gewerbering 19

Tel. +49 / 85 31 / 82 72 | Fax: +49 / 85 31 / 82 71

[germany@schauer-agrotronic.com](mailto:germany@schauer-agrotronic.com)

**SCHAUER<sup>®</sup>**

PERFECT FARMING SYSTEMS

[www.schauer-agrotronic.com](http://www.schauer-agrotronic.com)